



Suffolk County Council Annual

Report 2020/2021

Firstly I would like to say what a pleasure it has been working with the parish council and residents over the past 16 years as your County Councillor and to be re-elected for another four years. If this year has taught us anything is that looking after each other and working together is of paramount importance and I've been overwhelmed by the sense of community spirit and collaboration which takes place in our parishes. Below are some of the projects and issues I've been dealing with in the last year.

Flooding – Lackford River Lark

Further to the concerns raised over the flooding of the River Lark in Lackford I've now collated a number of interested parties who are interested in working together to look at issues relating to this. There is a good mixture of people from local authorities, residents, statutory organisations, parish council and landowners. Now the election is over I will arrange a meeting with all parties to devise an action plan.

Speeding

Whilst the mobile VAS units are effective (I've seen them in action), the data still shows that there are speeding issues. The PCC has been alerted to the issues and we are awaiting his suggestions of what action is to be taken.

Boundary Review

The boundary commission have been reviewing the Suffolk County Council divisions, reducing the number of councillors from 75 to 70. There have been significant changes in the west of the county in particular the Thingoe division have been split up which means that a lot of your parishes have been joined with other parishes.

Given these significant changes the Boundary Commission has decided to reconsult from yesterday until 21st June with its recommendations being published in August.

I would urge you all to comment giving evidence of your thoughts, you will need to form a response with evidence for change, rather than just saying that you agree or disagree. For example, the common interests you have or don't have with the parishes in your area, working relationships, numbers of residents/future residents, general commonalities between neighbouring parishes etc.

No images? [Click here](#)

The
Local Government
Boundary Commission
for England

Have your say

**A consultation on the further draft
recommendations for
division boundaries in Suffolk has
begun**

<image001.png>

We have opened an additional phase of public consultation in our review of Suffolk County Council's electoral arrangements.

Our consultation will close on **21 June 2021**.

Our consultation focuses on new proposals for council division boundaries in:

Abbeygate & Tollgate

Barrow & Thingoe

Blackbourn

Brandon

Clare

Eastgate & Moreton Hall

Hardwick

Haverhill East & Rural

Minden & St Olaves

Row Heath

Beccles & Kessingland

Carlford

Framlingham & Wickham Market

Martlesham

Rushmere St Andrew

Saxmundham & District

Wilford

Woodbridge

We are not seeking further comment in respect of any other part of the County.

We previously held an public consultation on our draft recommendations for new division boundaries across Suffolk. We listened to the views put to us during the consultation and propose to make changes to the plans in the areas of Suffolk to reflect the local evidence received.

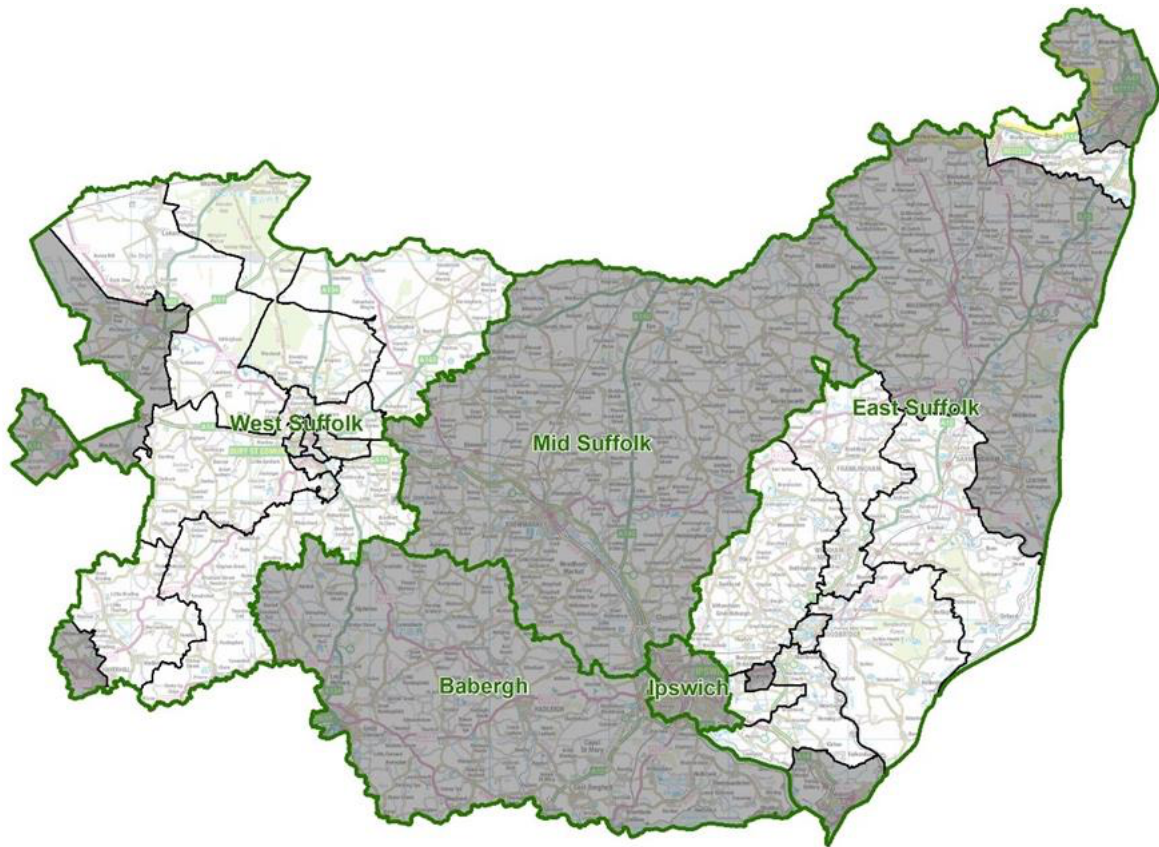
Due to the significance of the proposed changes made to the listed areas, we are opening an extra phase of consultation, for these areas only, to see what you think of the new recommendations.

We are satisfied that we have received sufficient evidence to finalise our proposals for new electoral divisions for the rest of the county.

Further information in relation to these changes can be found by viewing our letter to the Chief Executive of Surrey County Council, found below.

This period of consultation starts today, **11 May 2021** and closes on **21 June 2021**. During this period, we welcome comments and supporting evidence on our further draft recommendations for the listed areas.

We will publish our final recommendations for the whole County on **31 August 2021**



<image002.png>

<image003.png>

You can take part in the consultation by clicking the button at the top of this message or through our [interactive consultation portal](#).

[Our website](#) includes further information about the Commission and the review of Suffolk.

We encourage everyone who has a view on the further draft recommendations to contact us, whether you support them or whether you wish to propose alternative arrangements.

Get in touch

We welcome comments on the further draft recommendations by 21 June 2021. Representations should be made:

- Through our [interactive consultation portal](#);

- By email to reviews@lgbce.org.uk

- Or in writing to Review Officer (Suffolk), Local Government Boundary Commission for England, 1st Floor, Windsor House, 50 Victoria Street, London, SW1H 0TL

Skirting

An order has been placed to skirt back the path that runs along the A1101 through from Hengrave.

Lackford Lakes Picnic Area

Along with Susan I was able to provide funding for a new picnic area at the lakes. I'm also looking to support the church with the removal of some trees which could pose a risk to the church.

ANPR

We've registered the parish as being interested in the trial of Automatic Number Plate recognition camera on the A1101.

Highway Issues

As ever much of my work is dominated by highway issues, if you have any issues ai would suggest you report them on line using the highways reporting tool a link is below:-

[Suffolk County Council - ReportIT](#)

If you feel that you are not getting the answers you'd expect and or action is not being taken please do not hesitate in letting me know I can then escalate the issue.